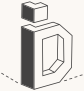


A Project by: **SHARNAM ARIES**

Site: Sharnam Aries, Behind Ambe Public School, Sama-Savli Road, Vemali, Vadodara.

Ph.: +91 95127 66111, 94265 86592 Email:- sharnamrealty@gmail.com

Architect:  **INTEGRAL**  
DESIGN

Structural Engineer: Kambad Engineers

**Terms & Conditions:** (1) Possession will be given after 30 days of settlement of all accounts. (2) Stamp Duty, Registration & Legal Charges, Society Maintenance Deposits & Development Charges, etc will be borne by the purchaser. (3) Any additional charges or duties levied by the Government / Local authorities during or after the completion of the scheme will be borne by the purchaser. (4) Extra work shall be executed after making full payment (5) cancellation charges as per RERA. (6) In case of delay in water supply, electric light connection, drainage work by the concerned authority, developers will not be responsible. (7) Refund in case of cancellation will be made within 90 days from the date of booking of new client only. (8) Administrative expense of Rs. 20000/- & the amount of extra work (if any) will be deducted from refund amount. (9) All plans are subject to amendments and approval by the relevant authorities. (10) All photography and computer imagery are artist's impression and are provided for illustrative and indicative purposes only. While every reasonable care has been taken in providing this information, the developers cannot be held responsible for any inaccuracy. (11) Subject to Vadodara Jurisdiction.

RERA No.: PR/GJ/VADODARA/VADODARA/Others/  
Gujarat RERA Website: www.gujrera.gujarat.gov.in

*Sharnam*   
**aries**  
4BHK LUXURIOUS FLATS



## fulfilling your lifestyle dreams...

*Sharnam Aries evolved with the thought to create premium lifestyle apartments in the vicinity of **Sana-Savli Road**, one of the preferred residential localities of the city.*

*A limited edition boutique apartment project with spacious 4-BHK planning, it fulfills all the aspects that add to create a comfortable, elite and luxurious home. The basement offers a host of lifestyle amenities for your recreation like Gym, Indoor Games & Mini Theater.*

*Possessing the best-in-class material specifications, a premium finish, branded fixtures & fittings, your home at Sharnam Aries shall indeed give you a lifetime of blissful living.*



## Specifications

### **Flooring**

- Living - Dining- Kitchen-All Bedrooms: Premium Vitrified Tiles
- All Bathrooms, Balcony, Wet Kitchen: Premium Ceramic/ Vitrified Tiles

### **Windows & Doors**

- Main door : Decorative Main Door with veneer polish on both sides
- Internal doors : Flush doors with Veneer polish on both sides
- Aluminium Section windows with Granite jams
- Standard quality ironmongery & fittings for all doors
- Clear reflective Glass glazing in all Windows

### **Sanitary Fittings**

- Premium Designer Bathrooms with Good quality bath fittings of reputed make like Roca/Jaquar or equivalent

### **Kitchen**

- Provision for Modular Kitchen Fitting with premium granite platform

### **Electrical Installation**

- Concealed Electrical Wiring in Conduits
- Premium Modular Switches
- Provision for Air-conditioning in all rooms

### **Painting**

- External walls with Apex or textured finish
- Internal walls with putty finish

### **Parking**

- 2 Car Allotted Car parking for each unit
- Designated Guest parking




Typical floor Plan



Salient Features 

- Landscaping all around the campus
- Elegant Ground Floor Lobby
- Branded Automatic elevators (2 nos.)
- Generator for Power Backup (for common amenities)
- Decorative Main Gate with Security Cabin

Club (Leisure) Features 

- Gym / Health Club
- Mini Theater
- Indoor Games Hall
- Senior Citizen's Garden
- Children's Play Area
- Terrace with covered & open sitting

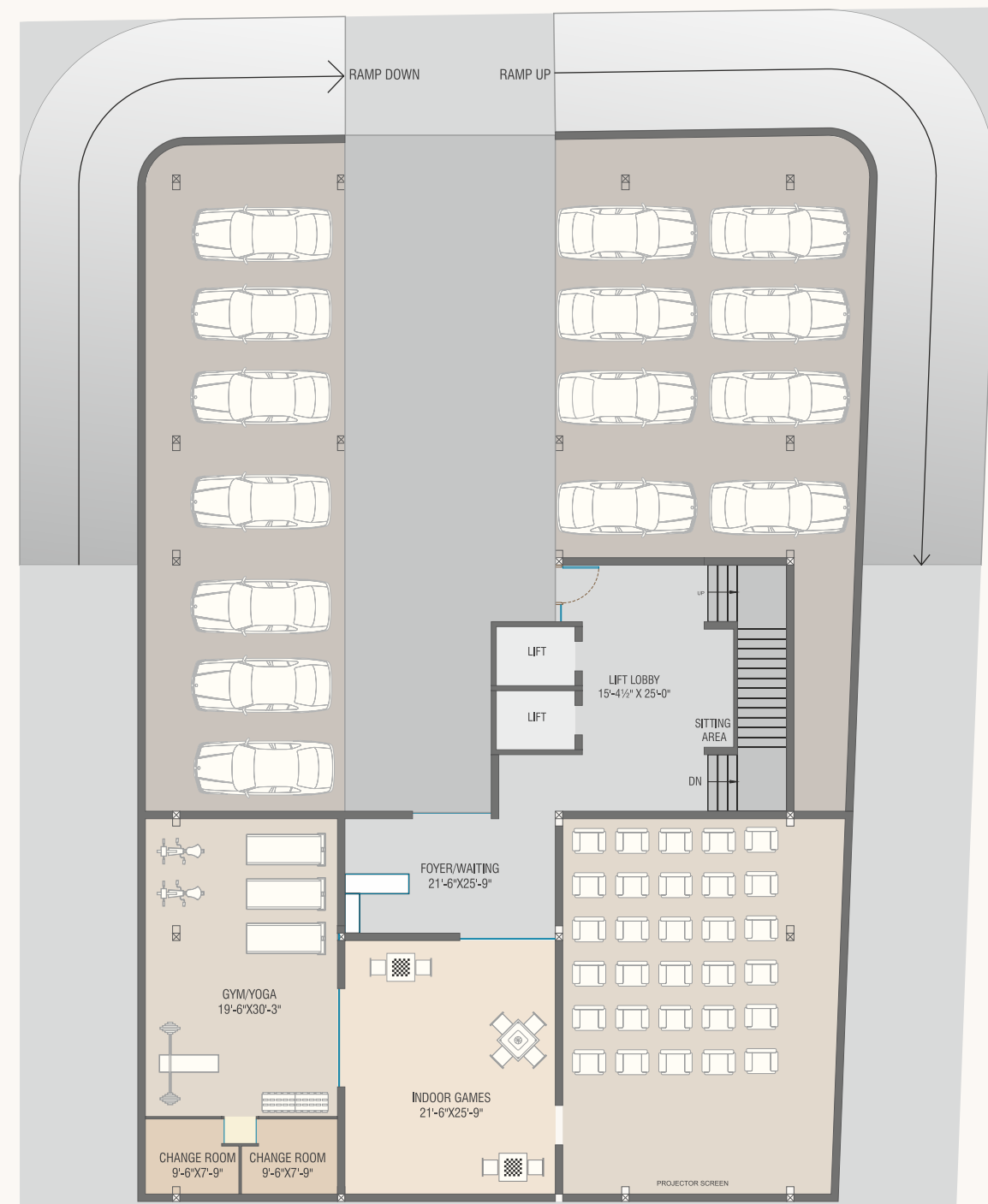
Ground floor plan



Typical floor plan



Basement floor plan



12.00 MT WIDE ROAD



A super-prime location

- Railway station: 7 kms • Airport: 4 kms • School: 0.5 kms
- Bank: 1 kms • Hospital: 0.5 kms • Grocery Store: Walking Distance

\*All distances are approximate.

Energy saving solutions

- Energy efficient electrical equipments
- Native and low water consuming plants in common areas
- Naturally lit cross ventilated living spaces
- Rain water harvesting
- Level controllers in water tanks to avoid wastage

Safety features

- Video Door Phone Security
- Closed Circuit Television (CCTV) System with Surveillance Cameras at Strategic Locations in Common Areas
- Gated community with round the clock security